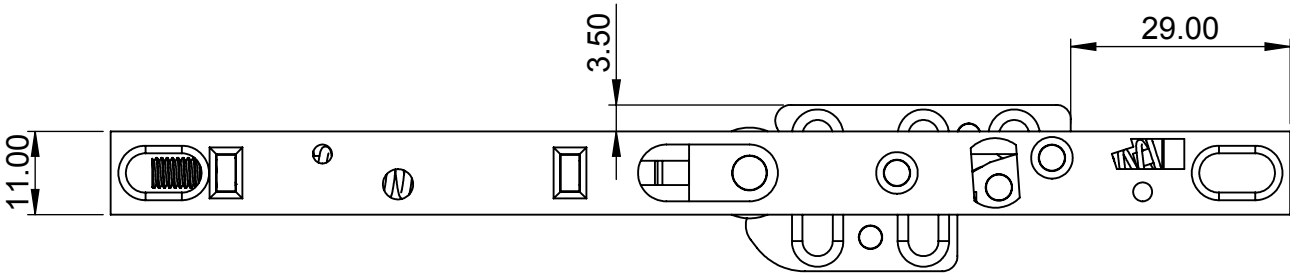
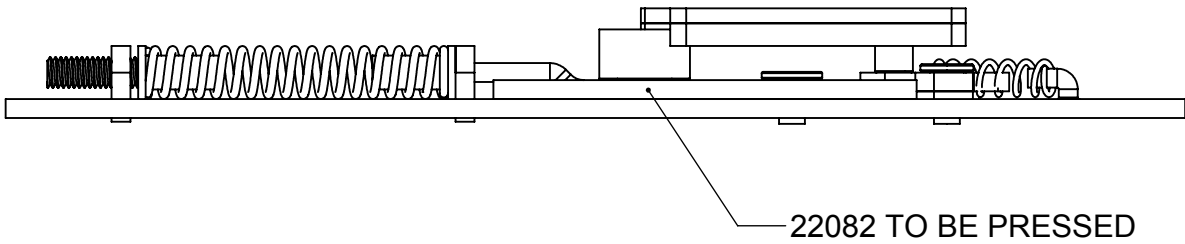
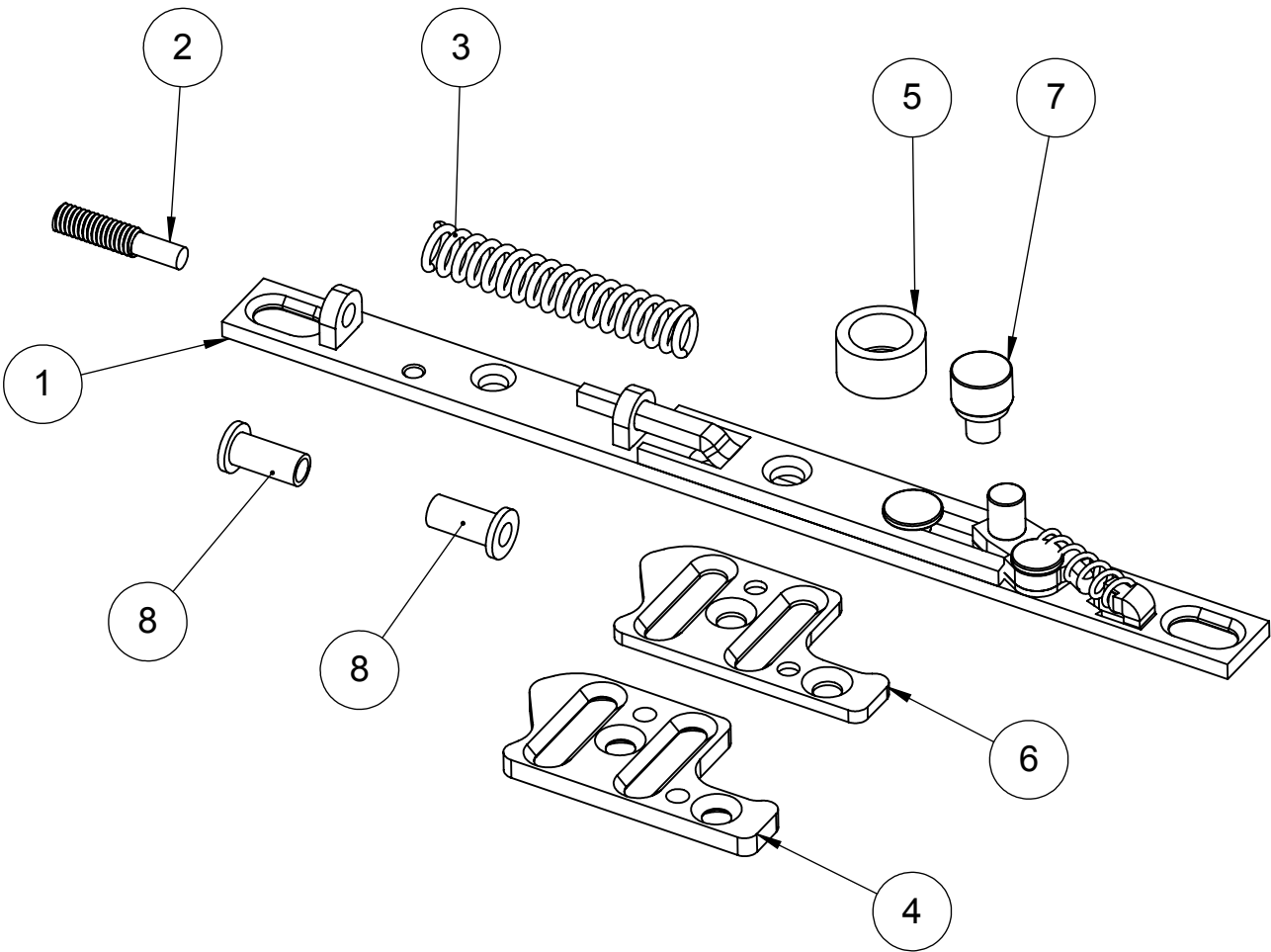


ITEM NO.	PART NUMBER	DESCRIPTION	22191/QTY.
1	22083	BASE PLATE OPPOSITE ASSEMBLY	1
2	21485	HEX TENSION ROD	1
3	21486	STAINLESS STEEL ROLLER	1
4	21493	COMPRESSION SPRING 6	1
5	21495	KEEP TOP PLATE	1
6	21496	KEEP BOTTOM PLATE	1
7	22082	OPPOSITE SHOULDER HEX RIVET - D	1
8	22078	SPRING WASHER	2



模具制造用图 ISSUED FOR TOOLING	
TO	TSA
DATE	14/12/2016
SIGN	I. SANGHA

DO NOT SCALE - IF IN DOUBT ASK	
○ DENOTES CRITICAL DIMENSION	
PROJECT CODE:	DL-070
MATERIAL:	N/A
FINISH:	SEE PART DRAWINGS
VOLUME:	N/A
WEIGHT:	

01	TOOLING ISSUE	14/12/2016	IS
REV	MODIFICATION	DATE	BY

STRAIGHT ROAD, SHORT HEATH
WILLENHALL, WEST MIDLANDS, WV12 5RA
TEL: 01922 490049 FAX: 01922 490047

TITLE:		SYRING ECO-LOCK ECO LOCK OPPOSITE ASSEMBLY	
DRAWN BY:	IS	UNSPECIFIED TOL'S LIN ±0.10 ANG ±1.0°	
DATE:	14/12/2016		
SCALE:	1:2		
SPEC CODE:	REV	DRAWING No.	
	01	22191	