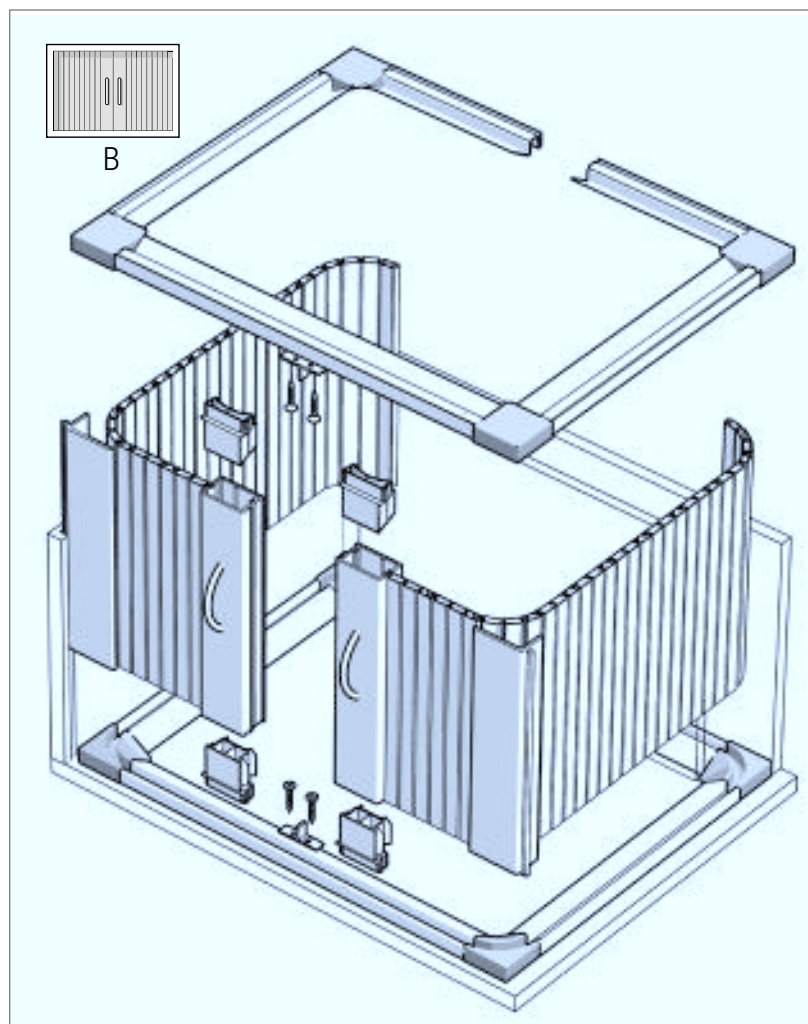
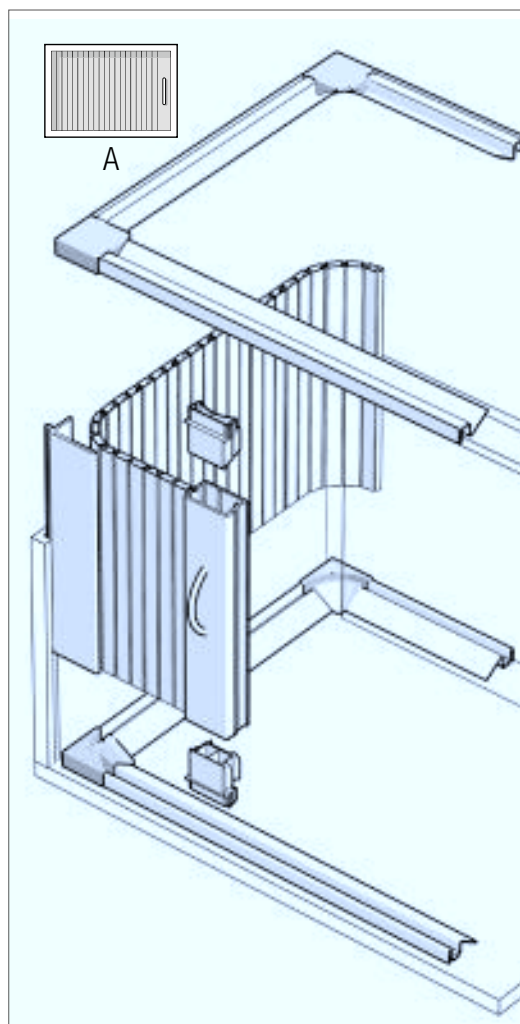
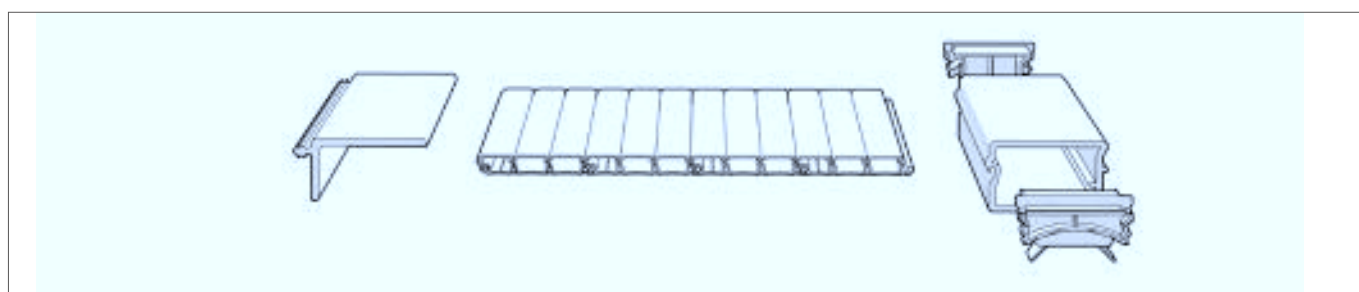
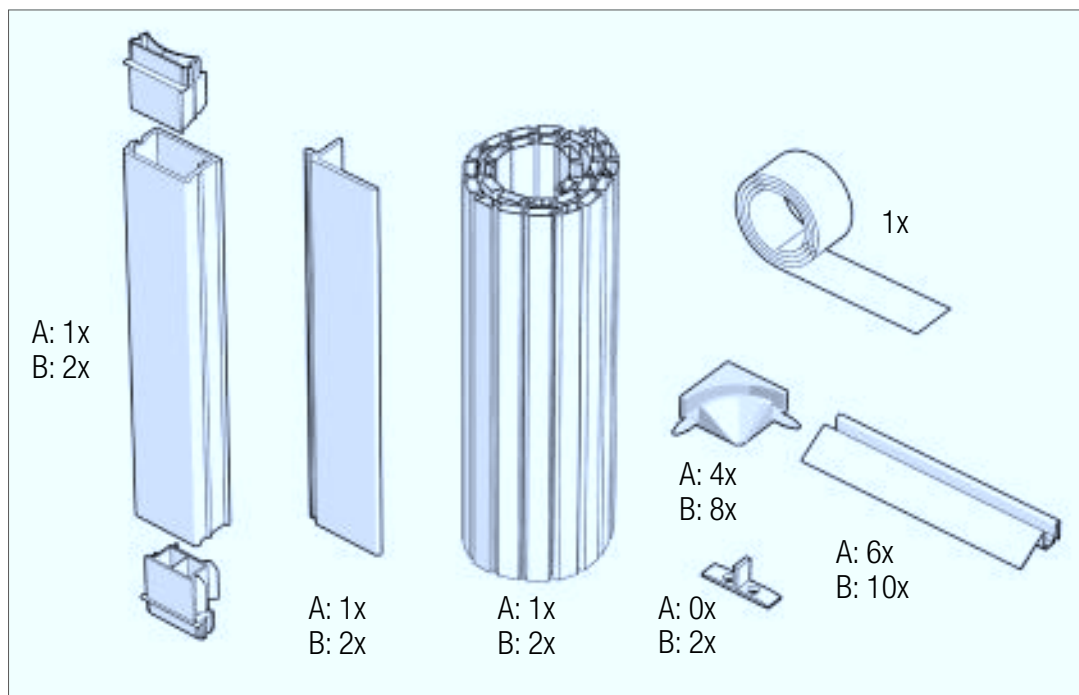
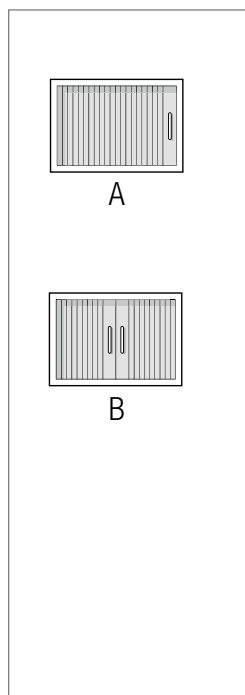


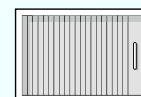
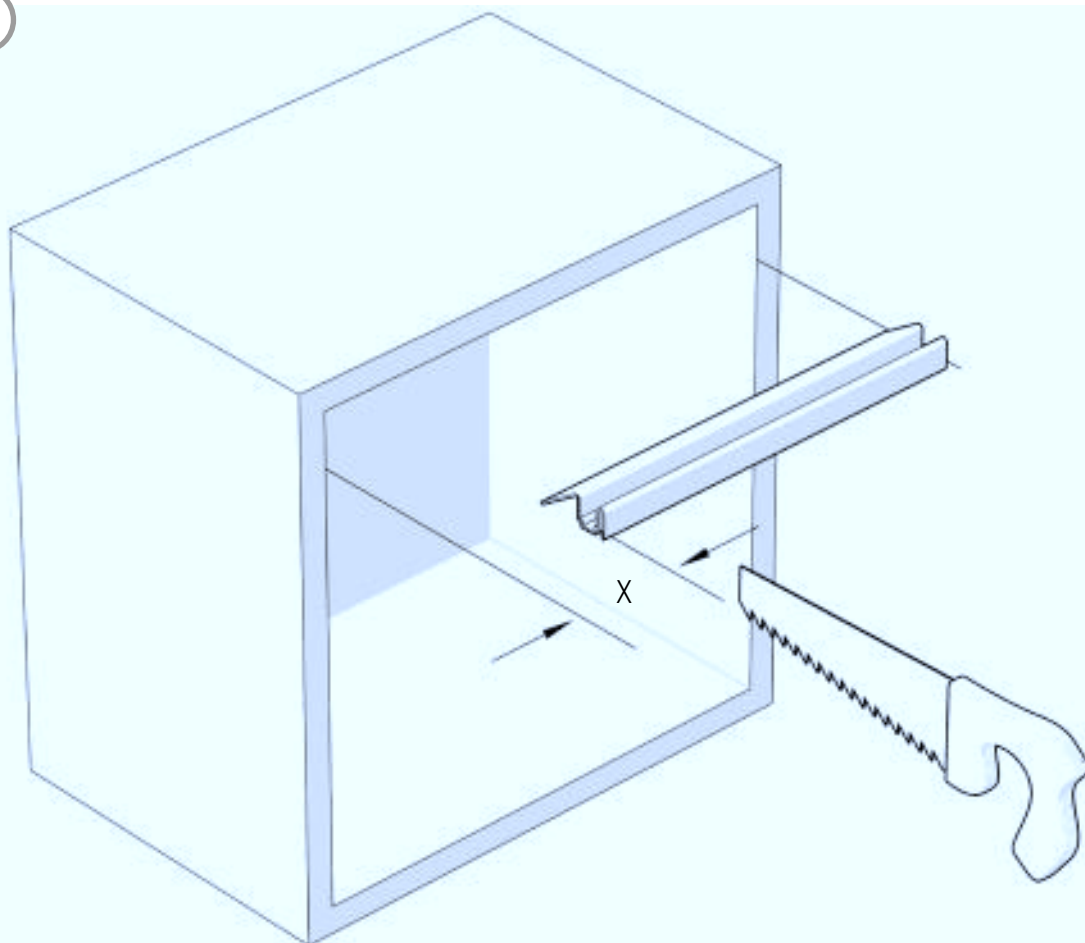
EXPRESS COLLECTION

RAUVOLET TAMBOUR DOOR SYSTEMS

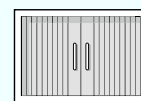
INSTALLATION INSTRUCTIONS - TOP BASIC TRACK SYSTEM



1



A: X=50



B: X=100

2

T

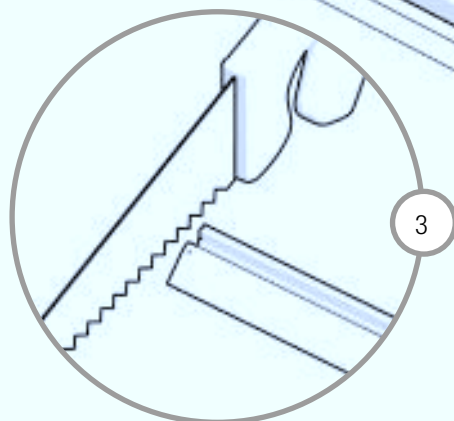
$L = T - 100$

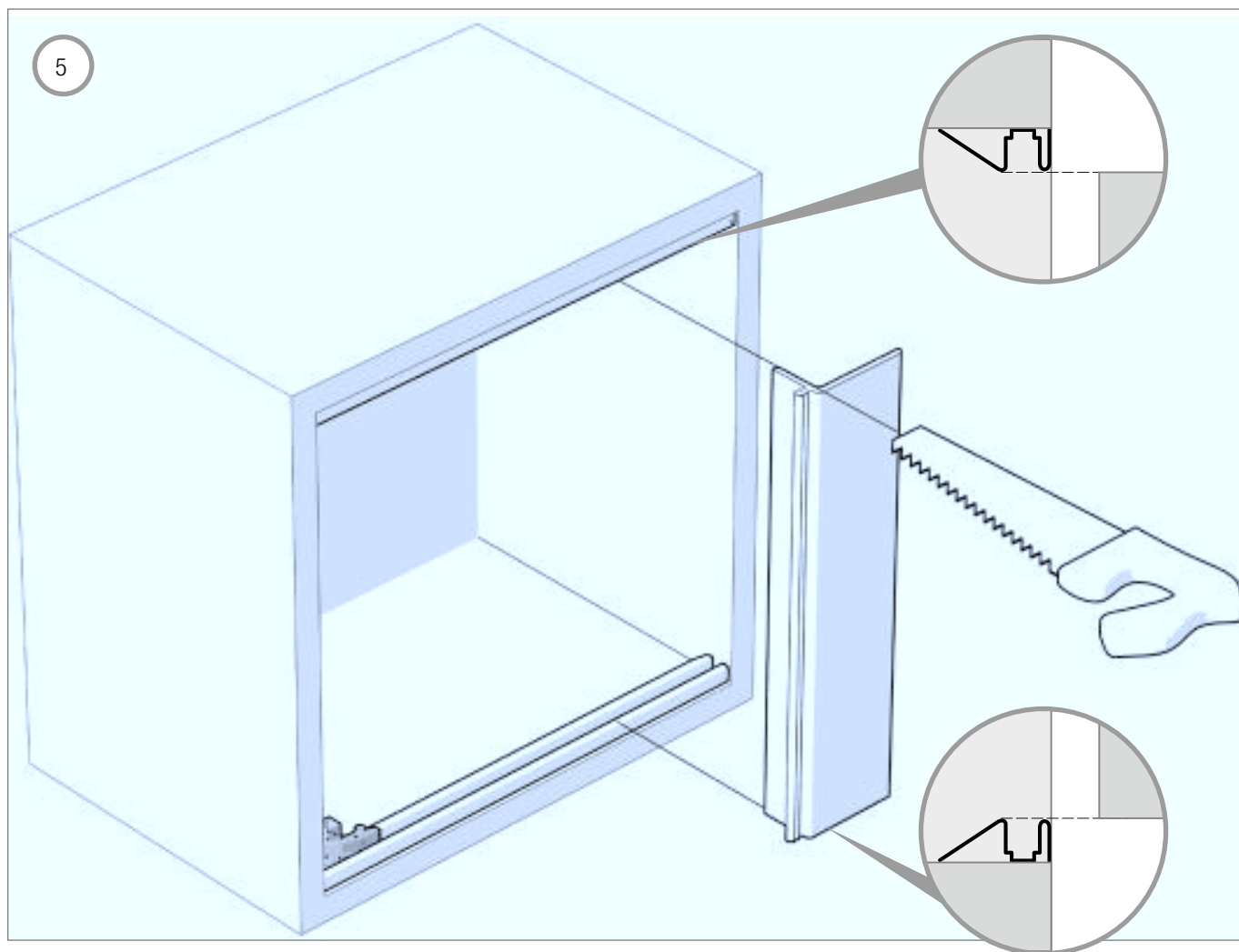
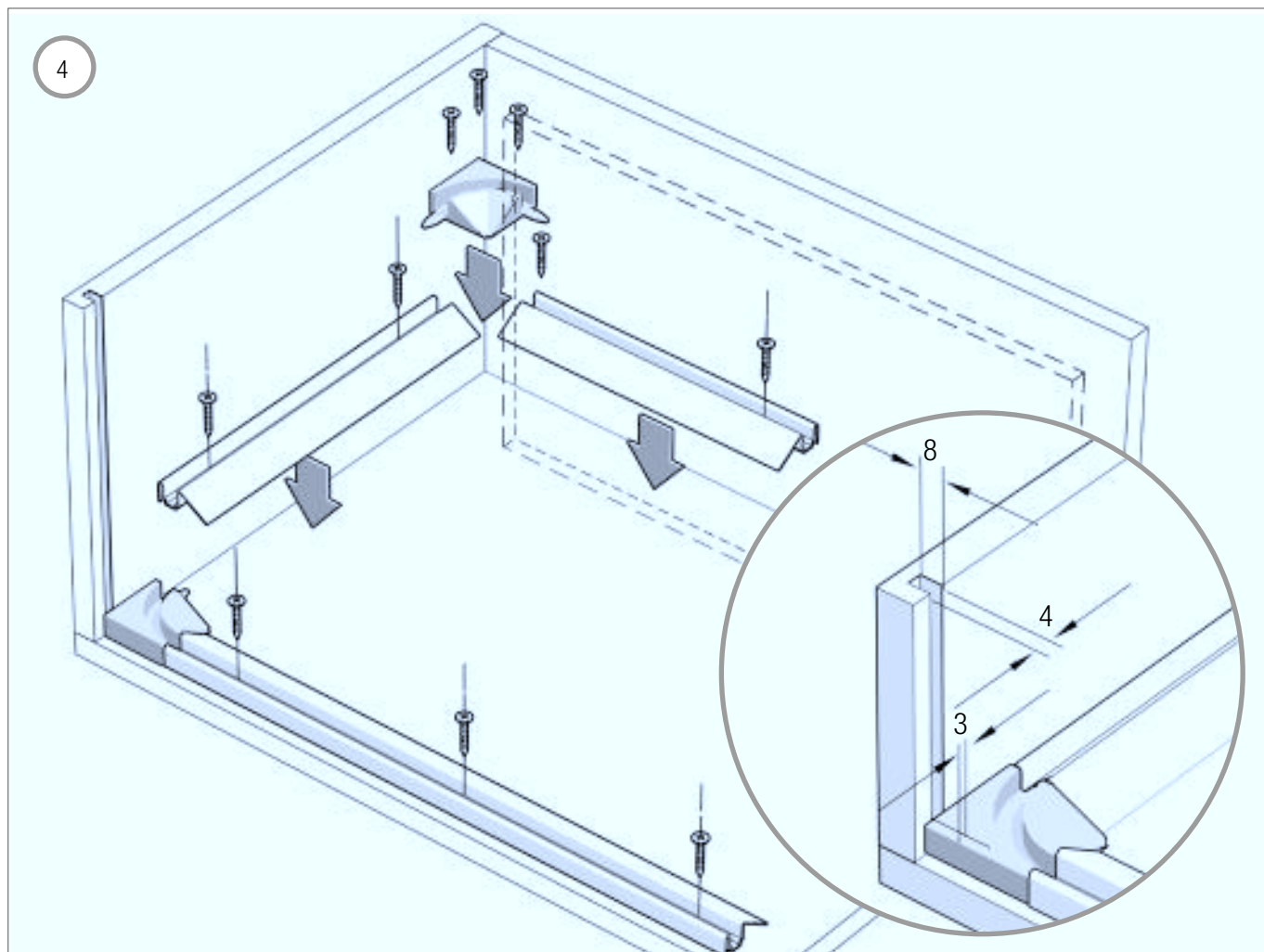
a

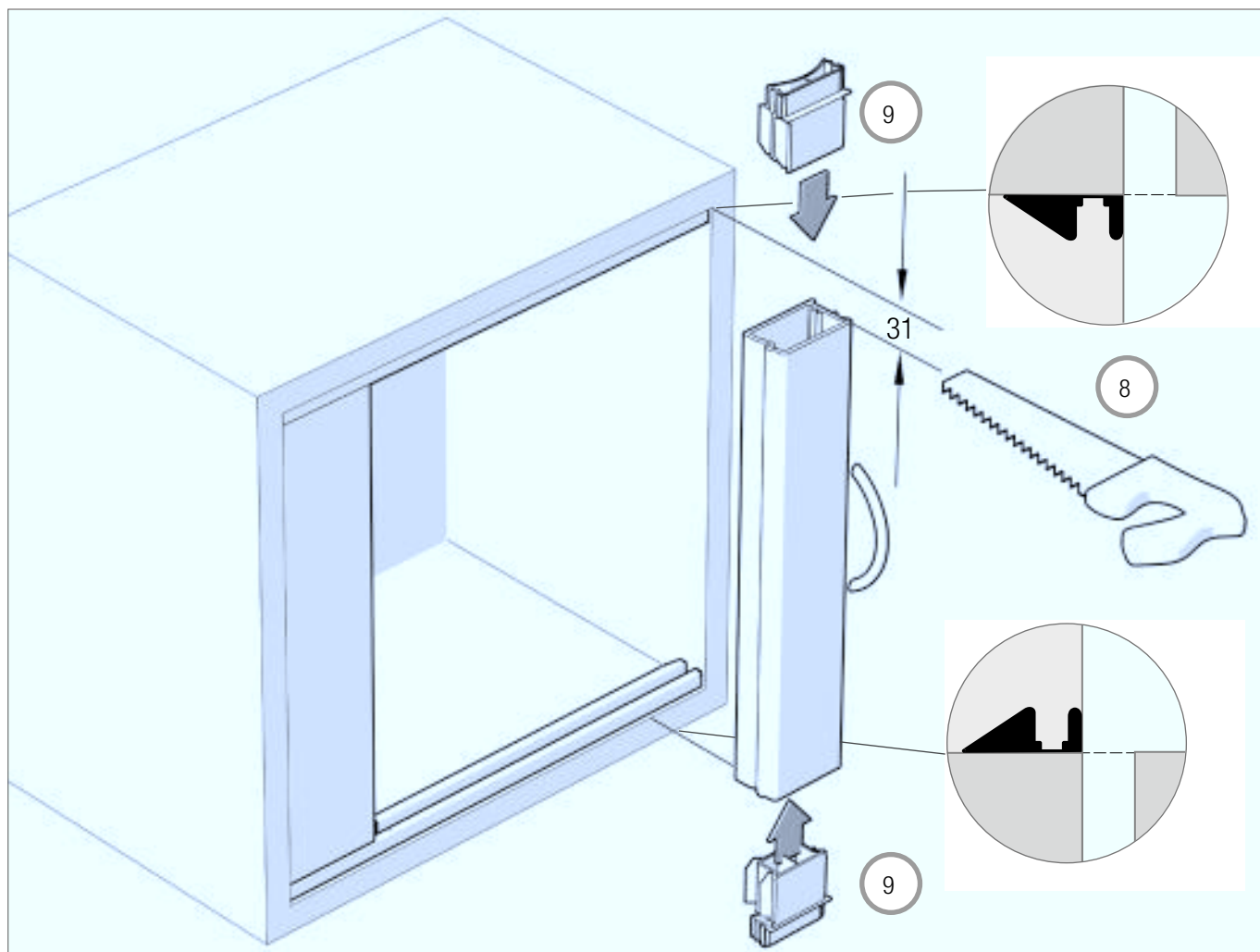
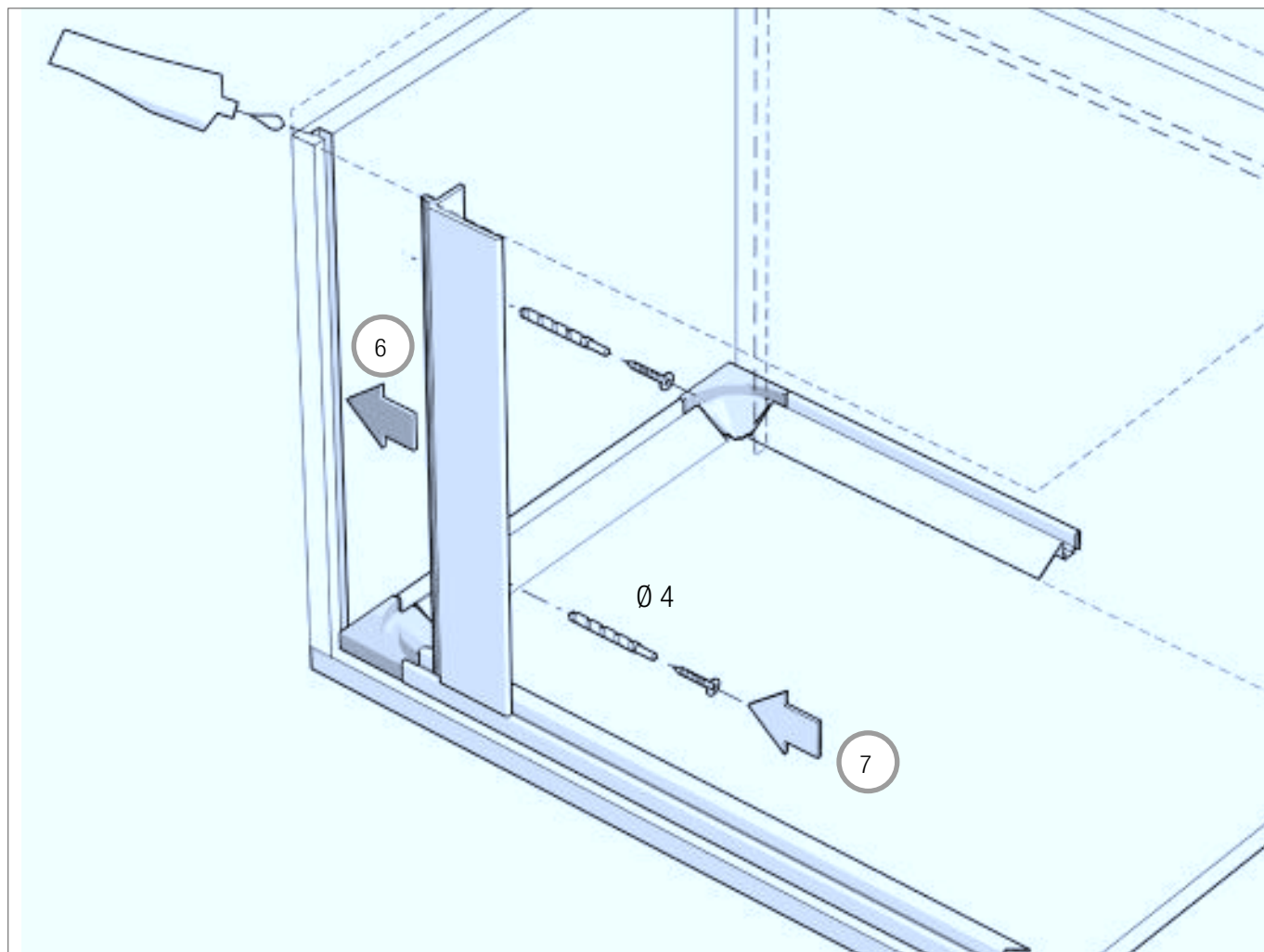
a = b

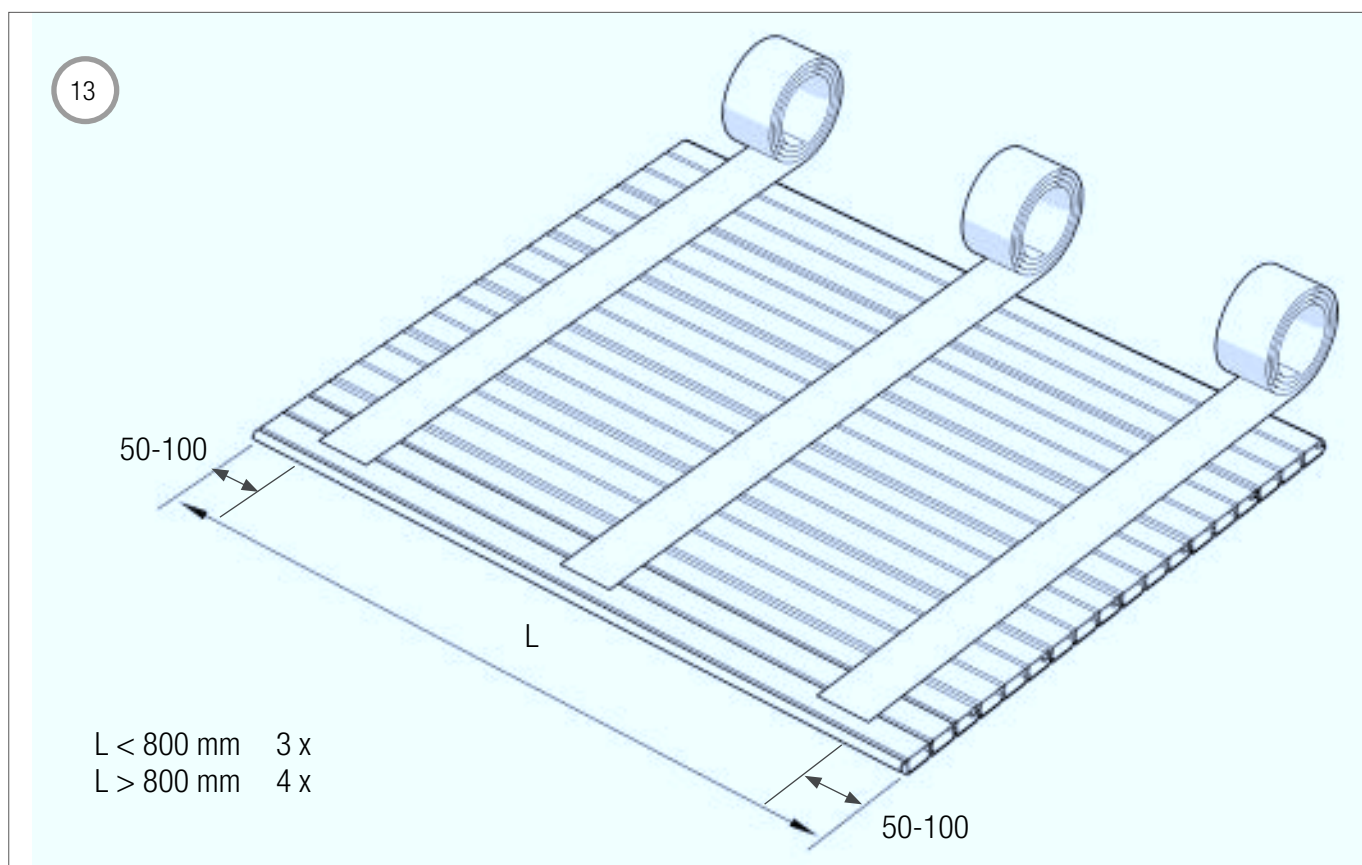
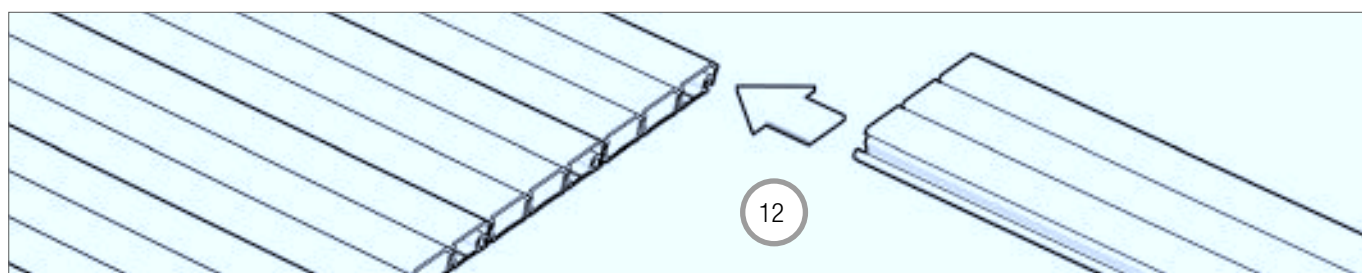
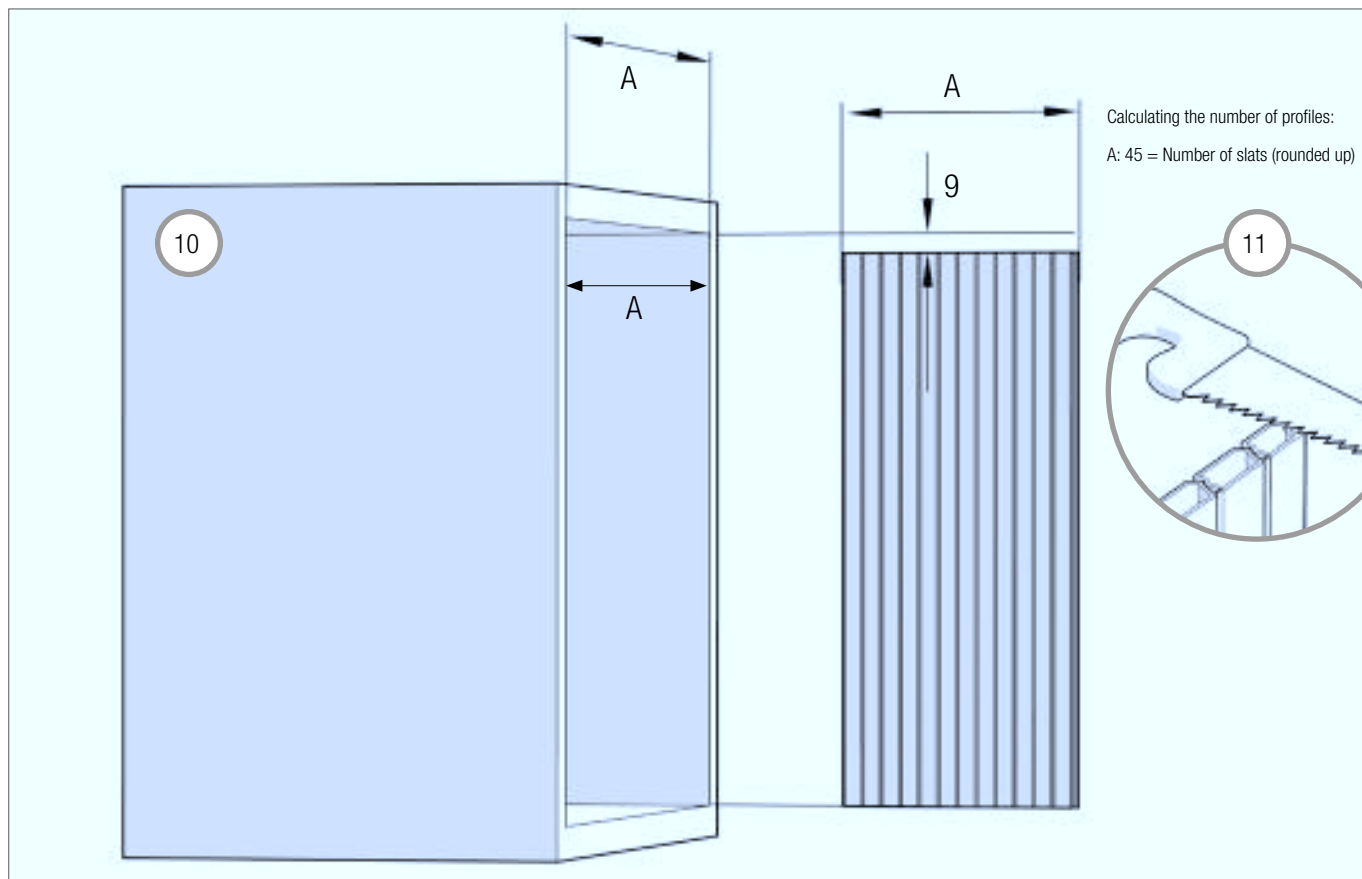
b

3

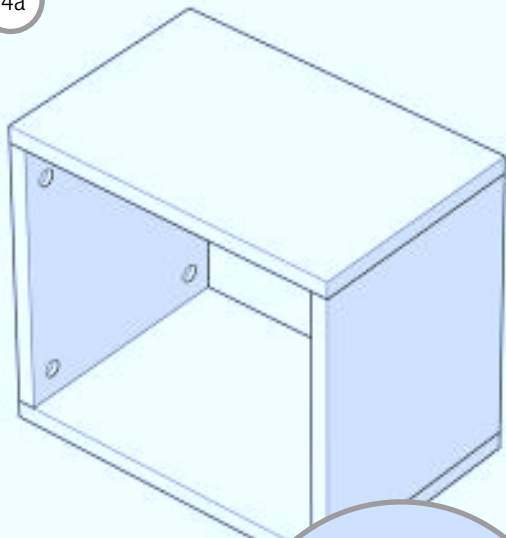




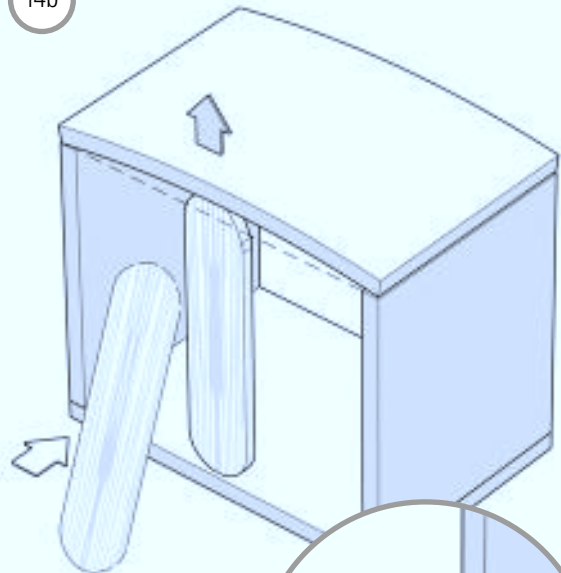




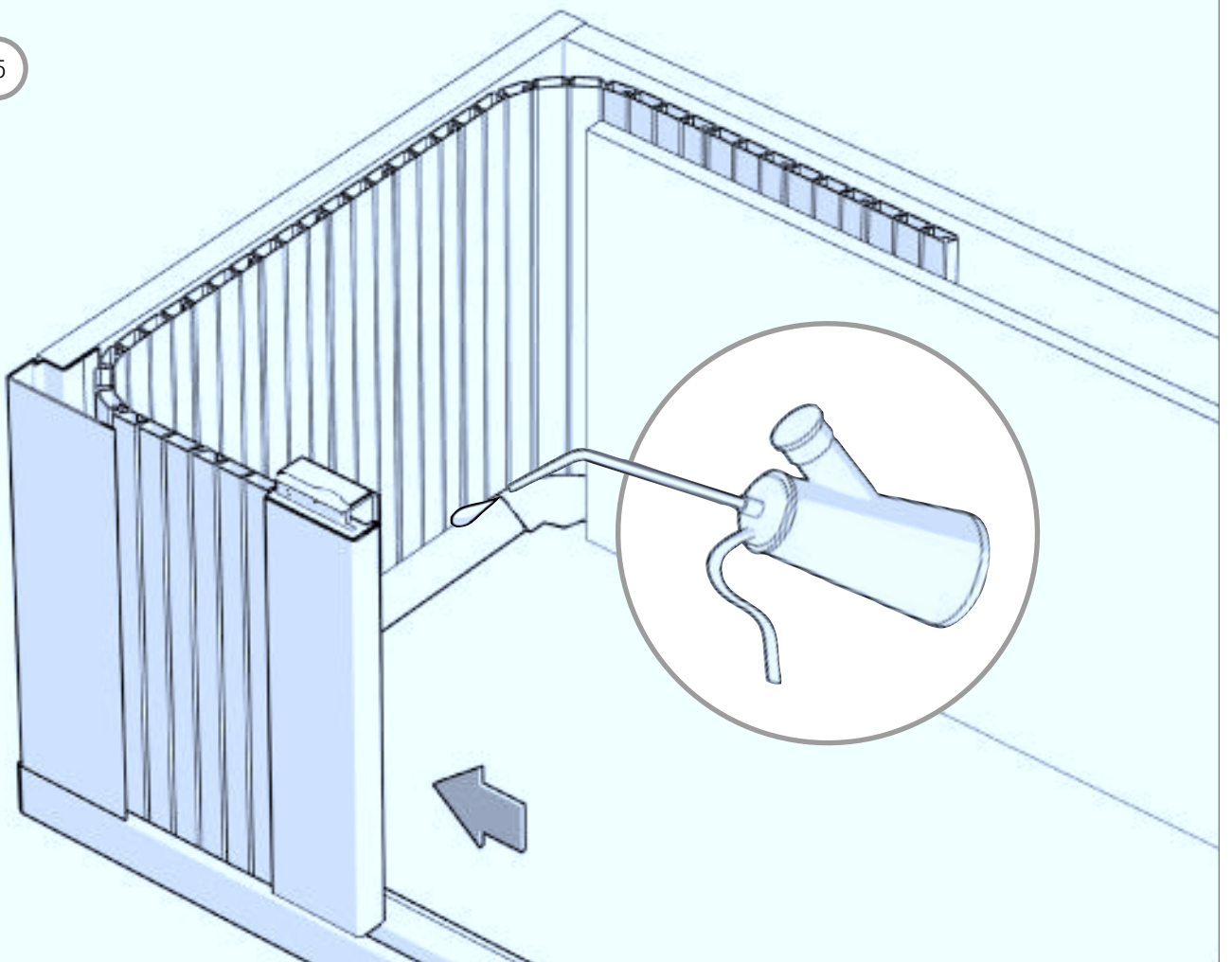
14a



14b



15



This document is protected by copyright. All rights based on this are reserved. No part of this publication may be translated, reproduced or transmitted in any form or by any similar means, electronic or mechanical, photocopying, recording or otherwise, or stored in a data retrieval system.

Our verbal and written advice relating to technical applications is based on experience and is to the best of our knowledge correct but is given without obligation. The use of REHAU products in conditions that are beyond our control or for applications other than those specified releases us from any obligation in regard to claims made in respect of the products. We recommend that the suitability of any REHAU product for the intended application should be checked. Utilization and processing of our products are beyond our control and are therefore exclusively your responsibility. In the event that a liability is nevertheless considered, any compensation will be limited to the value of the goods supplied by us and used by you. Our warranty assumes consistent quality of our products in accordance with our specification and in accordance with our general conditions of sale.