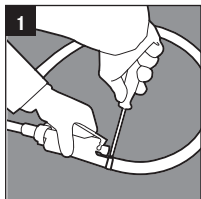
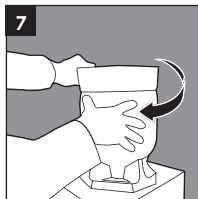


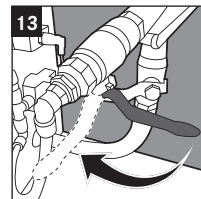
Collano Easy Applico 2000 Bedienungsanleitung «Erste Schritte»



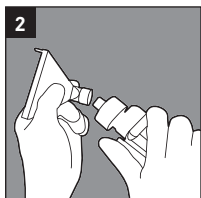
1 Montage Pistole
Pistole mit Schlauch verbinden.



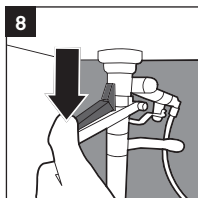
7 Drehung
im Uhrzeigersinn bis Tank einrastet.



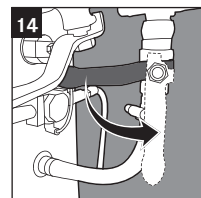
Kugelhahn
«Druckluft» öffnen.



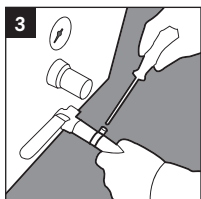
2 Montage Düse
auf Pistole.



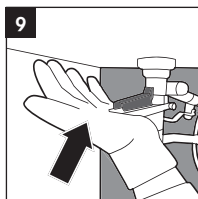
8 Adapterhebel
entriegeln.



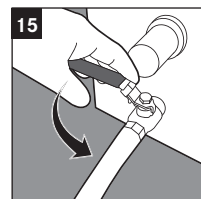
Kugelhahn
«Klebstoff» öffnen.



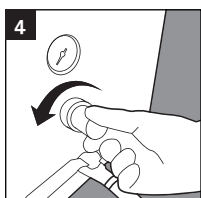
**3 Montage Appli-
kationsschlauch**
Schlauch am Kugel-
hahn anschrauben.



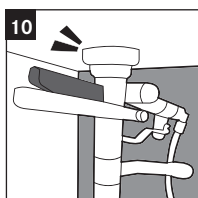
9 Anschlusshebel
hochdrücken.



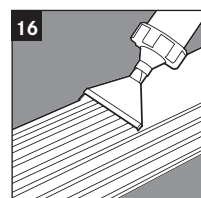
Kugelhahn
«Applikations-
schlauch» öffnen.



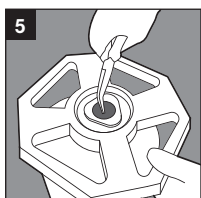
4 Manometer
auf Null stellen.



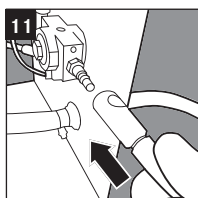
10 Adapterhebel
einrasten.



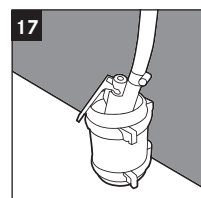
Klebstoff
auftragen.



5 Tank bereitstellen
blaue Verschluss-
kappe entfernen.



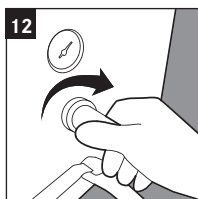
11 Druckluftschlauch
anschliessen.



Pistole
bei längeren Pausen
in Wasser eintauchen.



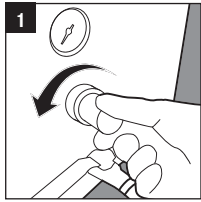
6 Montage Tank
Tank auf Adapter
positionieren.



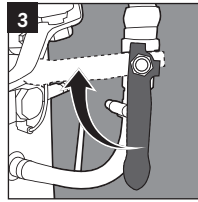
12 Manometer
bis maximal 3 bar
öffnen.



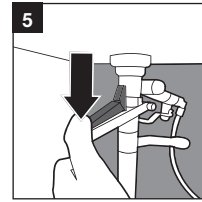
Collano Easy Applico 2000 Tankwechsel



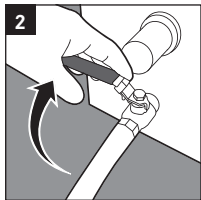
1 Manometer
auf Null stellen.



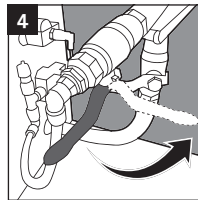
3 Kugelhahn
«Klebstoff»
schliessen.



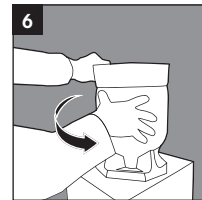
5 Adapterhebel
entriegeln.



2 Kugelhahn
«Applikations-
schlauch» schlies-
sen.



4 Kugelhahn
«Druckluft»
schliessen.

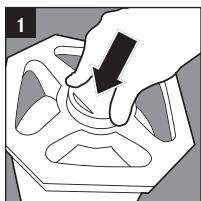


6 Drehung
gegen den Uhr-
zeigersinn bis Tank
entriegelt.

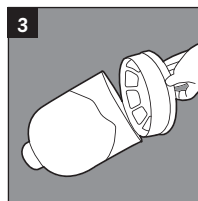
Klebstofftank aufsetzen

– Siehe Bedienungsanleitung «Erste Schritte».

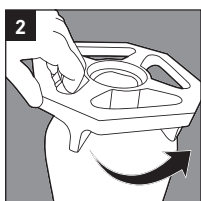
Entsorgen



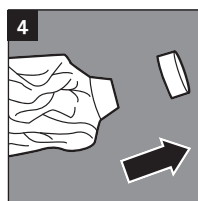
1 Entlüften
rote Entlüftungs-
kappe verwenden.



3 Boden
entfernen.



2 Deckel
abschrauben.



4 Entlüftungskappe
entfernen.

